



*Catalogue*

**Parallel-Shape Kitchen  
Factory ➤ Your Home.**



Say Goodbye to Showroom Overheads

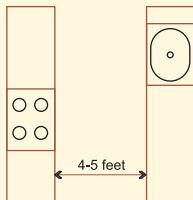
# About Tiyara Livings

At Tiyara Livings, we're more than just a modular kitchen and home solution brand — we're a movement that brings affordability, trust, and factory-direct quality into Indian homes. Established with the vision to eliminate showroom overheads and middlemen commissions, Tiyara empowers homeowners to design their dream interiors directly from the source, without inflated prices or hidden costs.

With years of experience in interior design, modular kitchens, wardrobes, and factory-manufactured fittings, Tiyara is proud to deliver premium-quality modular kitchen solutions at prices that make sense. We believe that luxury should be affordable, and quality must be transparent — and that's the foundation of every kitchen, wardrobe, and interior space we help create.

## Why Parallel-Shaped Kitchens Are India's Favorite

A parallel modular kitchen design is a smart and efficient layout featuring two long countertops running parallel to each other, creating a spacious central aisle that enhances movement and workflow. Often referred to as a galley kitchen in the West, this style is popular in both homes and professional kitchens for its ability to maximize space and organization. With a parallel modular kitchen design, you can efficiently separate cooking and preparation areas on one side and cleaning or storage zones on the other, making it ideal for compact as well as medium-sized flats.



# Best Suited For

- Compact to mid-sized homes
- Households with two or more people cooking simultaneously
- Spaces that need maximum storage and work efficiency

## Advantages From Us

- Space-efficient – Keeps everything within arm’s reach
- Faster workflow – Wet and dry zones separated
- Better storage – Cabinets on both sides
- Professional feel – Inspired by commercial kitchens
- Humidity-proof materials for monsoons
- Heat-resistant countertops for hot summers
- Compact appliance integration for smaller kitchens

Feature		Our Factory-Direct Kitchens	Other Brands
✓	Installation Time	72 Hours	7–15 Days
✓	Showroom Costs	No Overheads	Included in Price
✓	Design Flexibility	100% Custom	Limited
✓	Pricing	40–50% Lower	Higher
✓	After-Sales Support	Dedicated Support Team	Varies



*Design Inspirations*



01: Luxe Matte yellow - Premium Edition





02: Warm Walnut & Beige – Classic Edition





03: Pastel Green & White – Fresh Edition



# Material & Finish Options

## Category

## Choices

01. Cabinet Finishes

02. Countertops

03. Hardware

04. Appliances

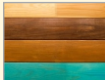
Acrylic, Laminate, PU, Glass, Matte

Quartz, Granite, Marble, Nano White

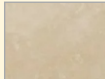
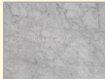
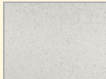
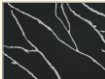
Hettich, Hafele, Blum

Elica, Faber, Bosch (on demand)

01.



02.



03.



04.





# How We Work



## STEP 1

Book Your Free Design Consultation



## STEP 2

Get Your Custom 3D Design &  
Transparent Quote



## STEP 3

72-Hour Installation – Sit Back and Relax



**Kitchen Installed**



# Testimonials

*We were amazed — ordered on Monday, cooking by Thursday. The parallel modular kitchen design works perfectly for our family of four.*

*Priya S., Noida*



*The factory-direct approach saved us ₹60,000 compared to a showroom quote.*

*Amit K., Delhi*



*We recently got our parallel modular kitchen designed, and it has completely transformed our home. The space looks modern, and cooking has become so much more enjoyable!*

*Neha & Rakesh, Delhi*



*Excellent service and attention to detail. The pull-out units and tall pantry make storage super convenient. Highly recommended!*

*Neha & Rakesh, Delhi*



# Reference

## 01 : Luxe Matte yellow – Premium Edition

**Finish :** Matte laminate in deep red with anti-fingerprint coating

**Backsplash :** Full-height glass backsplash in smoky grey

**Countertop :** Premium granite (black Galaxy) with beveled edges

**Lighting :** Warm under-cabinet LED strip lighting

**Appliances :** Built-in oven, induction hob, chimney

**Accessories :** Pull-out spice rack, soft-close cutlery tray, hidden bin system

**Area :** 12x12ft

## 02 : Warm Walnut & Beige – Classic Edition

**Finish :** Veneer in natural walnut paired with matte beige PU

**Handles :** Brushed nickel D-shaped handles

**Backsplash :** Beige marble-look large format tiles

**Countertop :** Black granite (Absolute Black) with polished edges

**Lighting :** Warm LED under-cabinet + recessed ceiling lights

**Appliances :** Oven, gas hob, integrated dishwasher

**Accessories :** Soft-close tall pantry, under-sink organizer, pull-out wicker baskets

**Area :** 15ft x 15ft

## 03 : Pastel Green & White – Fresh Edition

**Finish :** Matte pastel green PU paint + white acrylic upper cabinets

**Handles :** Slimline chrome edge pulls

**Backsplash :** Herringbone patterned white tiles

**Countertop :** White marble quartz with subtle veins

**Lighting :** Soft warm LED + pendant cluster over breakfast counter

**Appliances :** Built-in microwave, induction cooktop, concealed chimney

**Accessories :** Pull-out spice rack, tandem drawers, tall pantry organizer

**Area :** 12ft x 12ft



# Factory-Direct Modular Kitchen in Delhi NCR – No Showroom Overheads

No middlemen. No showroom cost.  
72 hour modular kitchen installation.  
Affordable modular kitchen without showroom costs

**Get A Free Kitchen Quote**



[www.tiyaralivings.com](http://www.tiyaralivings.com)